

# Central<sup>TM</sup> Semiconductor Corp.

145 Adams Ave., Hauppauge, NY 11788 USA

Phone (631) 435-1110 FAX (631) 435-1824

Manufacturers of World Class Discrete Semiconductors

www.centrasemi.com

CT-32

DIAC

DO-35 CASE

## DESCRIPTION

The Central Semiconductor CT-32 Diac functions as a trigger diode with a fixed voltage reference and low breakover current. This device is manufactured in a hermetically sealed glass package to ensure high reliability.

## MAXIMUM RATINGS (T<sub>A</sub>=25°C)

	SYMBOL		UNITS
Repetitive Peak On-state Current	I <sub>TRM</sub>	2.0	A
tp=20μs, f=120Hz			
Operating and Storage Junction Temperature	T <sub>J</sub> , T <sub>stg</sub>	-40 to +125	°C

## ELECTRICAL CHARACTERISTICS (T<sub>A</sub>=25°C)

SYMBOL	TEST CONDITIONS	MIN	MAX	UNITS
V <sub>BO</sub> *	C=22nF**	28	36	V
V <sub>BO1</sub> - V <sub>BO2</sub>	C=22nF**		3.0	V
ΔV	V <sub>BO</sub> & V <sub>F</sub> @ 10mA	5.0		V
V <sub>O</sub>	See Figure 2	5.0		V
I <sub>BO</sub>	C=22nF**		50	μA
I <sub>R</sub>	V <sub>R</sub> = 18V		10	μA
I <sub>p</sub>	See Figure 2		0.3	A
t <sub>r</sub>	See Figure 3		2.0	μs

\* Both directions.

\*\*Capacitor connected in parallel with device.

(SEE REVERSE SIDE)

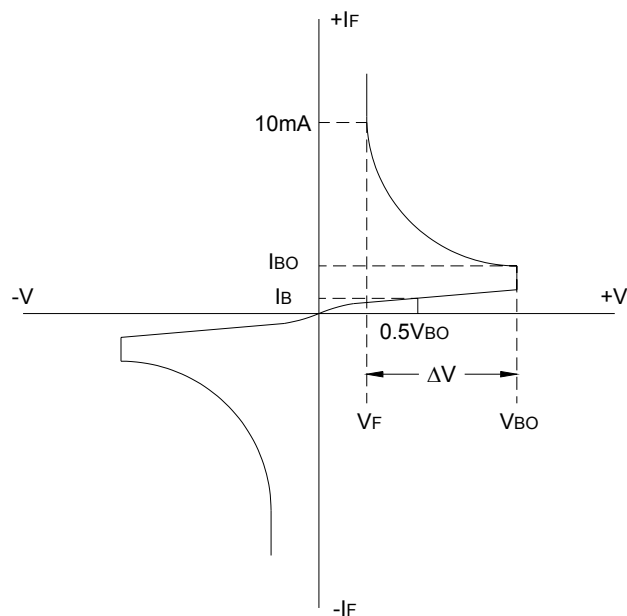


Figure 1. Voltage – Current characteristic curve.

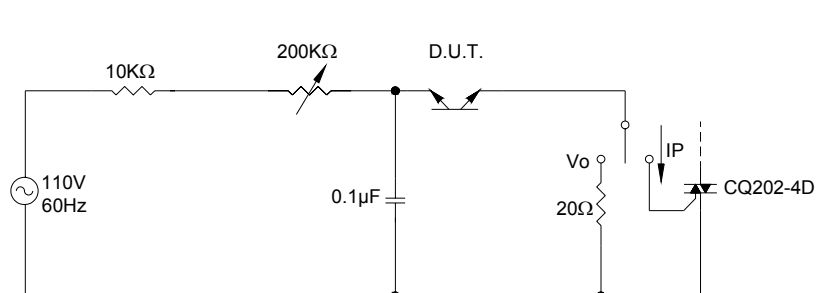


Figure 2. Test circuit.

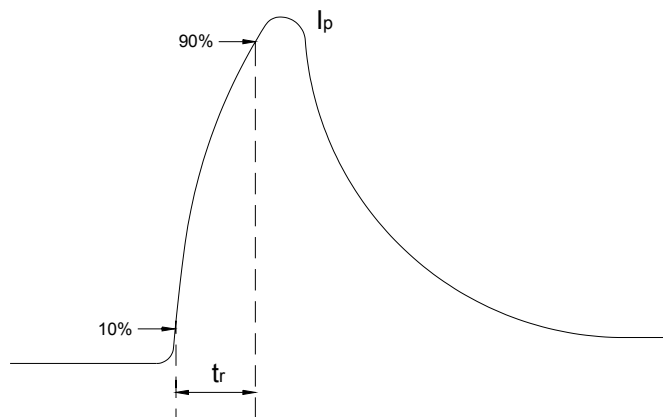
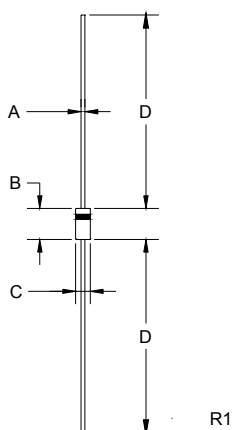


Figure 3. Rise time measurement.

## DO-35 PACKAGE - MECHANICAL OUTLINE



SYMBOL	DIMENSIONS			
	INCHES		MILLIMETERS	
	MIN	MAX	MIN	MAX
A	0.018	0.022	0.46	0.56
B	0.120	0.200	3.05	5.08
C	0.060	0.090	1.52	2.29
D	1.000	-	25.40	-

DO-35 (REV: R1)

**Central**<sup>TM</sup>  
Semiconductor Corp.

145 Adams Ave., Hauppauge, NY 11788 USA  
Phone (631) 435-1110 FAX (631) 435-1824

Manufacturers of World Class Discrete Semiconductors

www.centralsemi.com

This datasheet has been download from:

[www.datasheetcatalog.com](http://www.datasheetcatalog.com)

Datasheets for electronics components.